

TRILITH
LIVE

TECHNICAL PACKAGE

UPDATED APRIL 11, 2026

At Trilith, **we set the stage** and enrich the lives of the story makers who inspire the world. Opened in late 2025, Trilith LIVE is a **530,000-square-foot entertainment complex** located within **The Town at Trilith**. The venue will include a **2,200-seat theater**, **two 25,000-square-foot sound stages**, **multiple insert stages**, a **luxury cinema**, **production suites**, **meeting rooms**, and **more than 120,000 square feet of creative office and support space**. With its scale and versatility, Trilith LIVE is designed to host concerts, theatrical performances, live television tapings, conventions, banquets, meetings, conferences, weddings, and community celebrations **all in one place**.



Trilith LIVE Staff

Administrative Office: 470-713-5144

Box Office: 470-713-5140

Matt McClain	GM & Executive Director	mmclain@trilithlive.com
Linda McCarthy	Assistant General Manager	lmccarthy@trilithlive.com
Andy Burke	Director of Security & Experience	aburke@trilithlive.com
Ricky Gonzales	Director of Finance	rgonzales@trilithlive.com
Eric Morgan	Director of Events	emorgan@trilithlive.com
Catherine Gelinias	Administrative Manager	cgelinas@trilithlive.com
Matthew Freeman	Event Manager	mfreeman@trilithlive.com
Faith Horton	Event Coordinator	fhorton@trilithlive.com
Austin White	AV & IT Manager	awhite@trilithlive.com
Derrick Emerick	Manager, Experience	demerick@trilithlive.com
Amelia McInnis	Coordinator, Experience	amcinnis@trilithlive.com
Rick Long	Operations Manager	rlong@trilithlive.com
Chevonne Adams	Box Office Manager	cadams@trilithlive.com
Tianna Harrold	Box Office & Marketing Coordinator	tharrold@trilithlive.com

Trilith LIVE Rules and Regulations

Please read the following information carefully. The rules below are not an exhaustive list, please refer to your event contract for more information.

1. No nails, tacks, tape, or adhesives of any kind should be used on any surfaces of the theatre, lobbies, dressing rooms, or other areas. Please contact production before posting anything on the doors or walls.
2. Production and events may only use local stagehand and labor companies approved by Trilith LIVE. Please reach out to the Events team for contact information.
3. Nothing can be hung from any theater or stage rigging grid, truss, or batten without venue management approval. No hanging equipment or goods from the cantilever's beams, sprinkler pipes, or the catwalks. Please contact the event operations department for venue rigging guidelines. Rigging must be installed by Trilith LIVE approved riggers.
4. Furniture inside the dressing rooms, lobby, concourses, and other public and back-of-house areas is to be moved by Trilith LIVE staff only.
5. Trilith LIVE is a smoke-free and drug-free free campus.
6. Any alcohol needs and services are to be provided by Hannah Brothers Catering due to Georgia liquor laws.
7. Productions and events that utilize any equipment or props that cause smoke or haze will be subject to approval by Trilith LIVE management. In order to use these effects, a Fire Marshal may be required to be present in the venue. The cost for hiring a Fire Marshal is \$60.50/hour with a minimum of four hours reporting pay. After four hours, Fire Marshals will go into overtime and will be paid in one-hour increments.
8. If your production or event is utilizing any pyrotechnic effects, a pyrotechnic permit will need to be secured from the Fayetteville Fire Department and a pyro watch scheduled. Please contact the Trilith LIVE event operations department for details.
9. Due to limited space, delivery of sets, costumes, and other materials belonging to the production or client before the event time will not be accepted by Trilith LIVE staff without previous arrangements and possible additional charges to the event. Trilith LIVE makes no guarantee that space would be available to receive materials arriving early. At the conclusion of load out, all production related materials must be removed from the venue unless arrangements have been made with the event operations department.
10. It is Trilith LIVE's policy to require 24 hours' notice of cancellation of stagehand calls, if the stagehands are arranged by the venue. If less than 24 hours are given, production or the event may be charged a minimum four-hour call at the prevailing rates for each stagehand.
11. Event security is required at some events for public safety. Law enforcement may also be required for some events at the discretion of Trilith LIVE. Trilith LIVE management reserves the right to increase or decrease established security requirements as deemed necessary in the best interest of the facility and public safety.
12. Trilith LIVE staff is happy to coordinate any equipment rentals that you may require while at the venue. Please give ample notice of such needs in order to help us best serve the show.

If you have any questions regarding the above rules and regulations or any other questions regarding Trilith LIVE policies, please contact a member of the Events department.

Security Information

Patron, staff, artist, and client safety are a priority at Trilith LIVE. We thoroughly stress the importance of keeping everyone on our property safe during both public and private events.

- The security advance for shows and events will be done with a member of the Trilith LIVE security team.
- Weapons of any kind are not allowed at Trilith LIVE including but not limited to: firearms, knives, and pepper spray.
- Trilith LIVE requires that all guests attending an event be subject to security screening including pass-through magnetometer and bag check upon arrival. All clients and production staff are also subject to security screenings.
- Trilith LIVE has a clear bag policy for all guests. Clear bags can be no larger than 12"x12"x6" in size.
- We request that all shows provide a list of names for backstage access. Additionally, all road crew or vendors should wear visible production credentials and will go through a bag check and magnetometer prior to entry.
- Trilith LIVE security department reserves the right to schedule additional security staff members as it sees fit at the cost of the promoter or client.
- Use of drones or unmanned aerial vehicles on Trilith LIVE property is prohibited without the approval of Trilith LIVE management.
- For detailed information on any of the above security procedures, please contact the Trilith LIVE security department.

Dressing Rooms

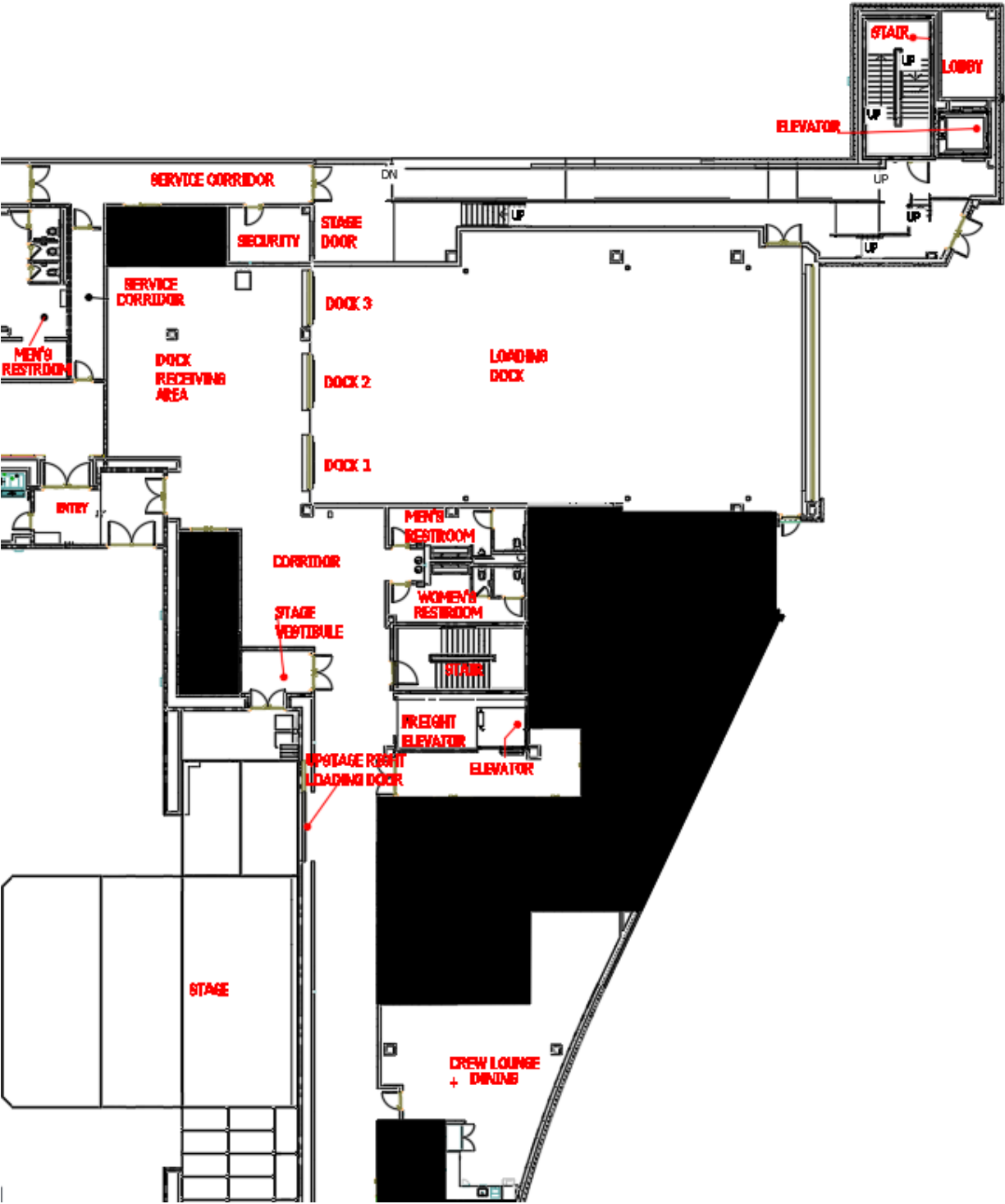
Room	Size	Sq. Footage	Capacity	Phone Lines/Internet/TV
Level 3 - Stage Level (880' Level)				
Dining	32'6" x 43'	1,090	35	(2) TVs

Level 4 (901' Level)				
Star Dressing Room 1	18'10" x 29'10"	435	19	(1) TV, (1) Internet Port
Star Dressing Room 2	18'6" x 30'2"	470	20	(1) TV, (1) Internet Port
Green Room	29'7" x 46'	1,429	37	(2) TVs, (1) Internet Port
Production	18'4" x 14'6"	257	22	(1) TV, (1) Internet Port
Workroom	11'2" x 22'7"	252	5	

Level 5 (917' Level)				
Star Dressing Room 3	31'8" x 18'6"	494	21	(1) TV, (1) Internet Port
Star Dressing Room 4	31'10" x 18'6"	497	23	(1) TV, (1) Internet Port
Star Dressing Room 5	32'4" x 18'6"	485	23	(1) TV, (1) Internet Port
Lounge	29'7" x 58'	1,917	49	
Multipurpose Room	63'6" x 30'11"	1,983	70	(2) Internet Ports

Floor Plans

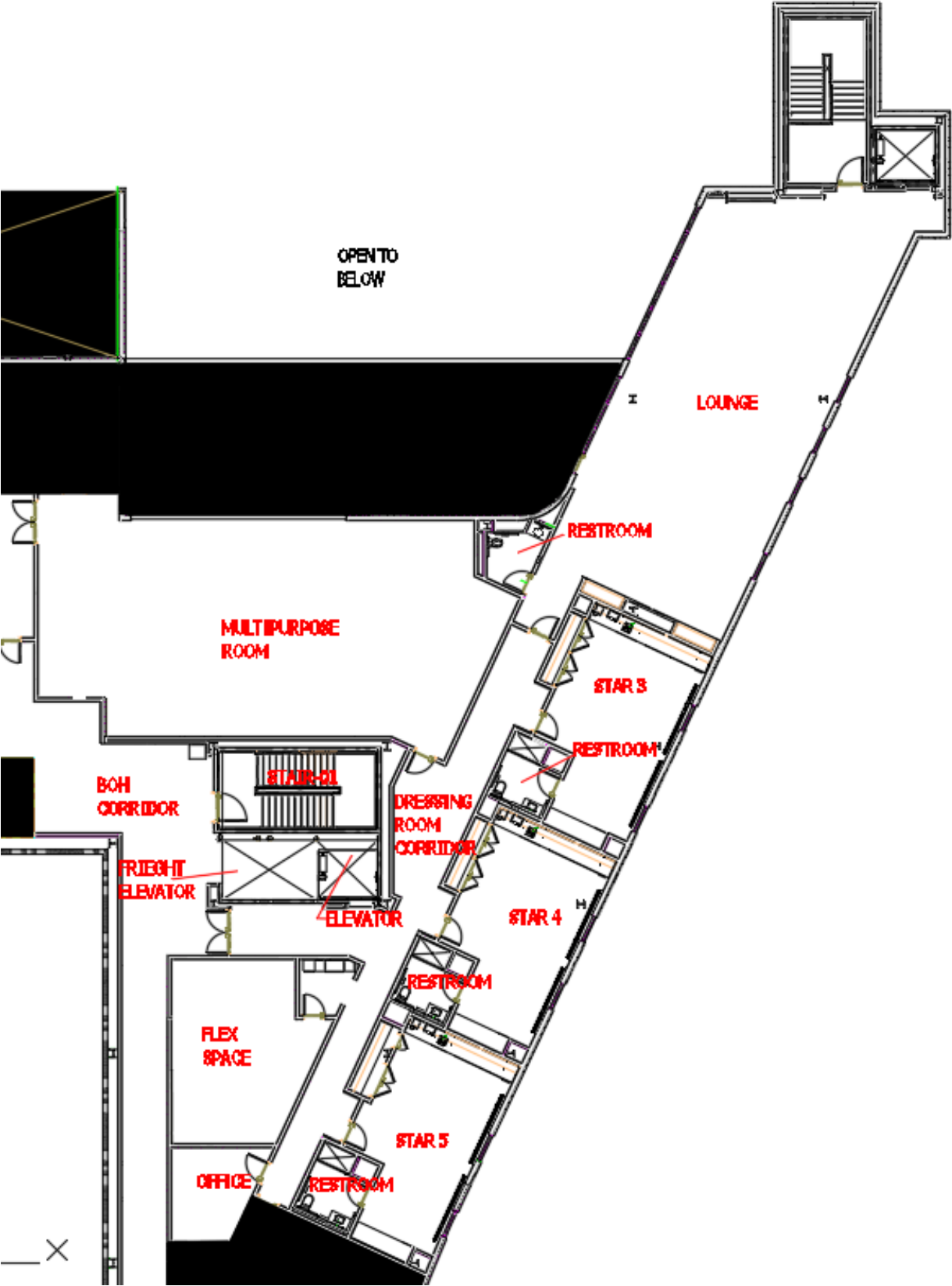
Level 3 – Stage Level (880' Level)



Level 4 (901' Level)



Level 5 (917' Level)



LINE SET SCHEDULE				
Line Set#	Description	Dist. From Plaster	Batten Length	Batten Type
.5	Torm Legs	4"	63'	Single
1	Valance	1'6"	63'	Single
2	Main Traveler	3'1"	63'	Single
3	Open	6'	63'	Single
4	Open	13'	63'	Single
5	Rear Traveler	16'	63'	Single
6	Cyclorama	17'6"	63'	Single

All battens are motorized.

General Measurements and Information

Please note:

The Valance, Traveler, lighting trusses, and various other soft goods are hanging in the theatre at all times. Goods are there for use by traveling productions. If goods need to be removed prior to a show's load-in, this will constitute a work call and will be charged as an additional cost to the promoter.

STAGE/HOUSE		MEASUREMENT
Proscenium Width/Opening	60'8"	
Proscenium Height	49'5"	
Stage Depth	50' with all stage lifts in use	
Stage Width	40'	
Stage Wings	Stage Right - 20' x 20' Stage Left - 16' x 24'	
Stage Height	Variable up to 5'	
Stage Floor to Front of House Grid	50'	
Stage Floor to Fly Tower Grid	68'	
Trim of Speaker Cluster	27.2'	
Downstage Edge to Front of House Mix	37'	
Front of House Mix Position	8' x 36.4'	
Downstage Edge to Terrace Rail	50.5'	
Downstage Edge to Balcony Rail	56.9'	
BACKSTAGE/LOADING DOCK		MEASUREMENT
Dock Door Dimensions	8.9' x 9.9'	
Upstage Right Stage Loading Door	11.8' x 11.9'	
Dock to Upstage Door Push Distance	100'	
Freight Elevator Dimensions	6' x 8' x 12'	
Freight Elevator Capacity	5,000lbs	

Audio Inventory

The venue is equipped with a d&b audiotechnik 180° XSL “soundscape” system. The primary audio is deployed with 7 x arrays, using a total of 66 x d&b audiotechnik XSL. There is an additional 75 x speaker positions using a variety of d&b speakers. The low frequency coverage is achieved with a flown cluster of 6 x SL-Subs. The room can be reconfigured in multiple ways by using a variety of stage lift configurations, including the proscenium deployment that uses 5 x arrays of XSL across the front of the proscenium. The system is designed to provide a state-of-the-art location based (immersive) audio experience but there are also simplified system presets that make every type of event functional in the venue.

QUANTITY	MAKE & MODEL	NOTES
66	d&b audiotechnik XSL 12	L/R, Center Fill and Side Fill Arrays
6	d&b audiotechnik SL	Subs
49	d&b audiotechnik 44S	Front Fills (built into the stage for different configurations)
25	d&b audiotechnik 44S	Under Balcony
20	d&b audiotechnik 10S	Upper Balcony
6	d&b audiotechnik 24S	Proscenium Fill
39	d&b audiotechnik	40D Amplifiers
3	d&b audiotechnik	D90 Amplifiers
25	d&b audiotechnik	5D Amplifiers

MONITOR INVENTORY		
QUANTITY	MAKE & MODEL	NOTES
12	d&b audiotechnik M4	Stage Wedge
6	d&b audiotechnik M6	Stage Wedge
1	d&b audiotechnik B6	Sub
4	d&b audiotechnik AL60	Side Fills
4	d&b audiotechnik V-GSUB	Side Fills
1	d&b audiotechnik D40	Touring Racks

CONSOLE INVENTORY		
QUANTITY	MAKE & MODEL	NOTES
1	Digico Q5	FOH - Pulse upgrade with Waves built in
1	Digico Q338	MON - Pulse upgrade with Waves built in

MICROPHONE & COMMS INVENTORY		
QUANTITY	MAKE & MODEL	NOTES
8	Axient	Digital Wireless Channels
4	AD2/B58	Handheld Transmitters
4	AD2/KSM9	Handheld Transmitters
2	KSM8	Microphone Capsule
12	AD1	Wireless Beltpack
6	DOA 4288	Headset Mic
8	Axient PSM	In Ear Monitors (8 Channels)
6	Shure KSM137	Small Diaphragm Condenser Mic
1	Pair of AKG 414	Large Diaphragm Condenser Mic
2	Shure KSM32	Cardioid Condenser Mic

LIGHTING FIXTURE INVENTORY		
QUANTITY	MAKE & MODEL	NOTES
31	ROBE Spider	
28	ROBE Esprite	
27	ROBE LEDPointe	
38	ACME Super Dotline	
92	Chauvet Strike 1	
156	Martin FATRON	Lines the Terrace & Balcony Rails
4	ROBE iForte-LTX	Follow Spots & Base Station

LIGHTING CONTROL INVENTORY		
QUANTITY	MAKE & MODEL	NOTES
1	GrandMA 3	Full
1	GrandMA	Light
3	MA3 Processing Unit M	
1	Martin P3-175	For Fatrons

ATMOSPHERE INVENTORY		
QUANTITY	MAKE & MODEL	NOTES
2	Antari F-7X Smazer	
2	Antari AF-4R	Effects Fan

VIDEO INVENTORY		
QUANTITY	MAKE & MODEL	NOTES
2	312" x 198" Da-Lite iMAG	SL/SR Proscenium Wall
2	139" x 78" Da-Lite iMAG	SL/SR Balcony
4	Barco UDM 4k30	Laser Projectors
1	50' x 25' Unilumens 3.9mm LED	Upstage

Video Production Suite

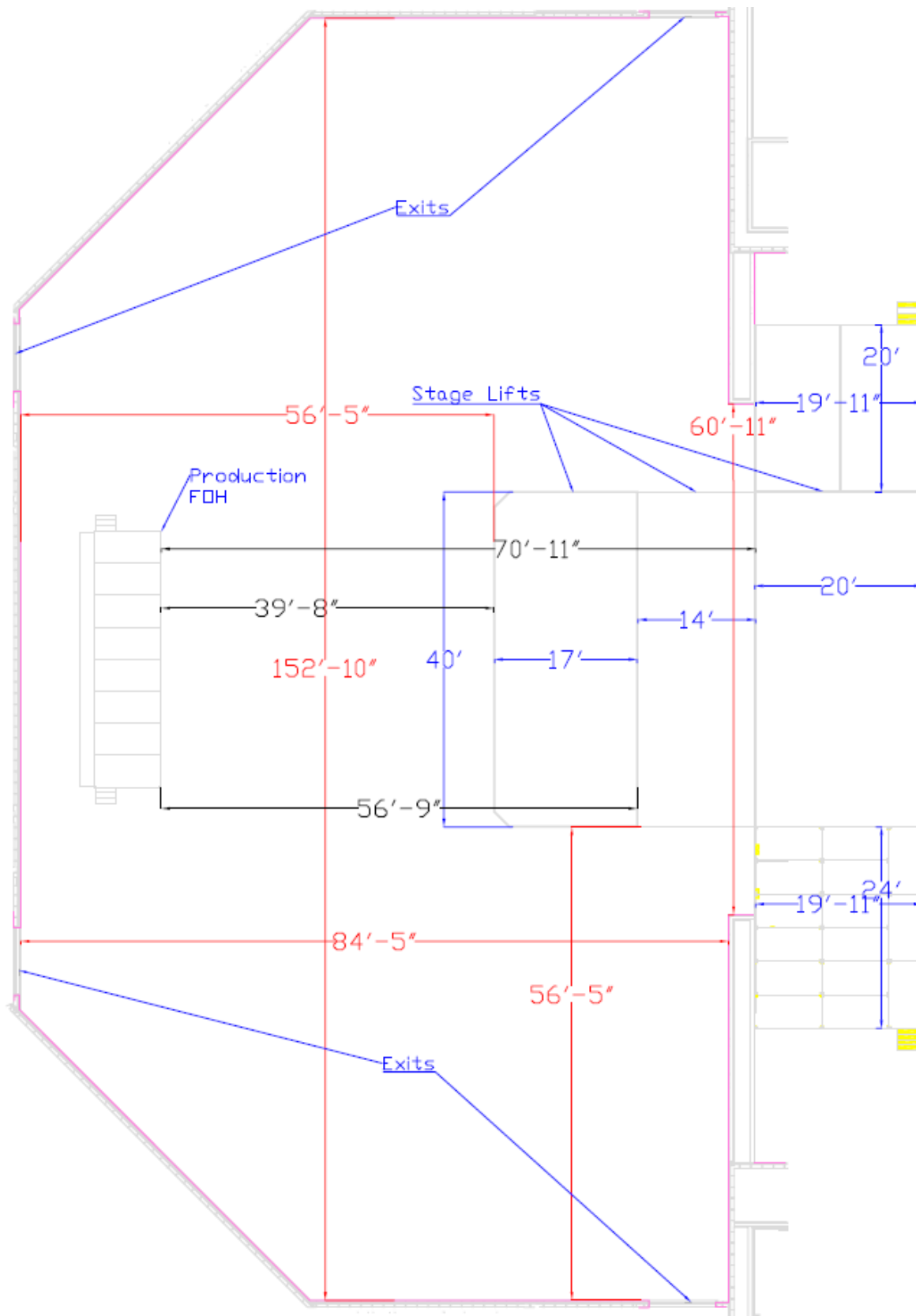
The venue provides 2 fixed Sony 4K PTZ cameras for iMAG purposes, offering both wide and close-up shots from FOH. Additionally, two 4K POV cameras are available for strategic use, such as technical overviews or static positions. The venue infrastructure also includes 56 x SMPTE camera cable locations that terminate in the broadcast suite rack room and can easily be integrated with rented CCU's to provide ample camera quantity and location options. The venue also includes a full video production suite capable of facilitating a 4K HDR "glass to glass" broadcast. The space features full shading and camera control, as well as graphics, playback, and recording capabilities. Additionally, The Audio Mix Suite is designed as a professional 5.1 mixing environment, integrating state-of-the-art audio processing with comprehensive visual monitoring. This suite is engineered to support high-precision audio work, offering a fully integrated environment for professional audio mixing and monitoring.

Show Power

All power tie in & disconnects must be made by a Trilith LIVE electrician. All temporary wiring must meet local and state requirements (e.g., NEC, UL Requirements)

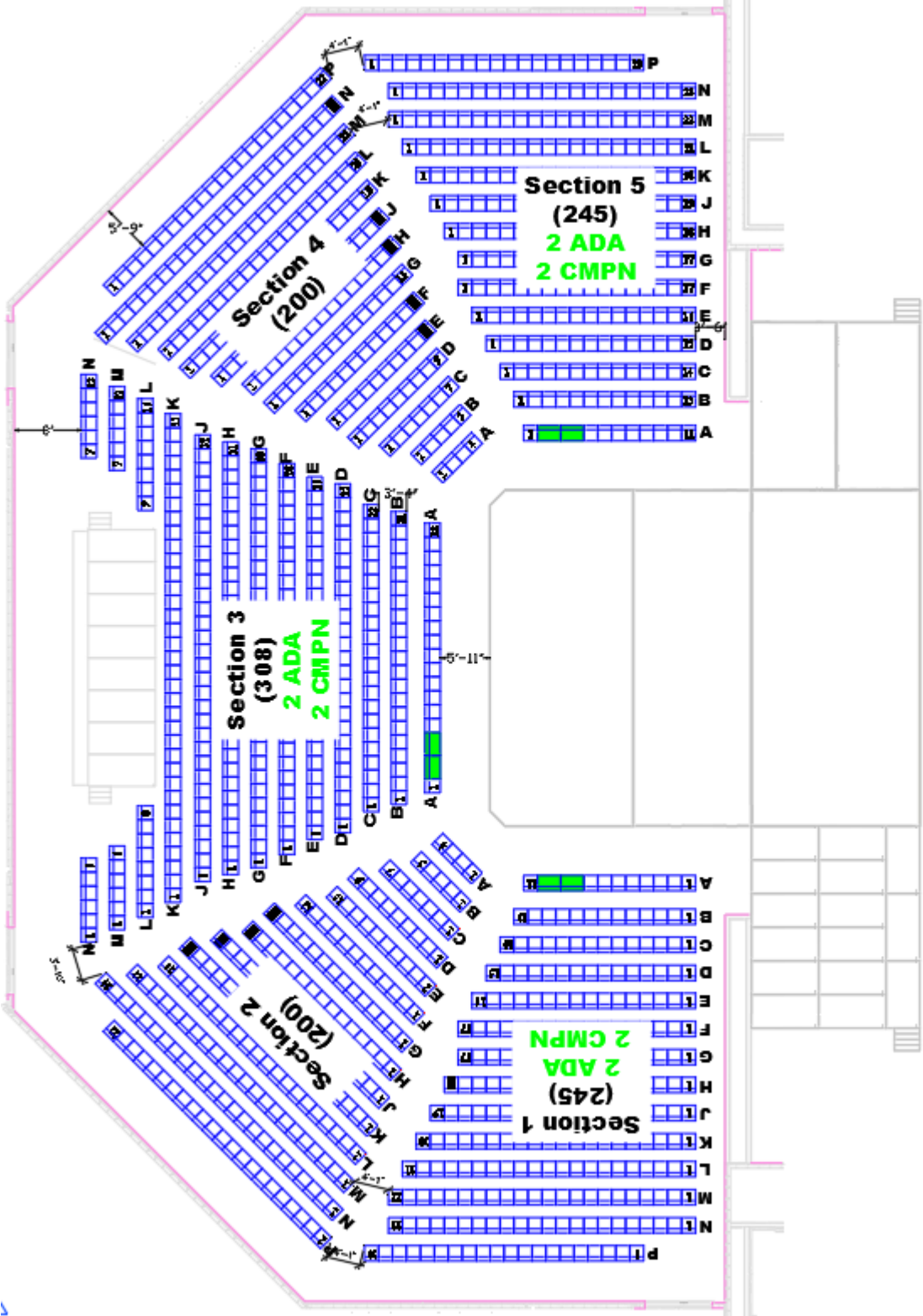
QUANTITY	MAKE & MODEL	NOTES
4	50amp Shore Power	Production Lot
3	50amp Shore Power	Loading Dock
1	200amp Company Switch	Stage Left
2	400amp Company Switch	Stage Right
1	200amp Company Switch	Stage Right Patch Room
2	400amp Company Switch	Gridiron
1	400amp Company Switch	Fly Tower

The Box Stage and Room Dimensions

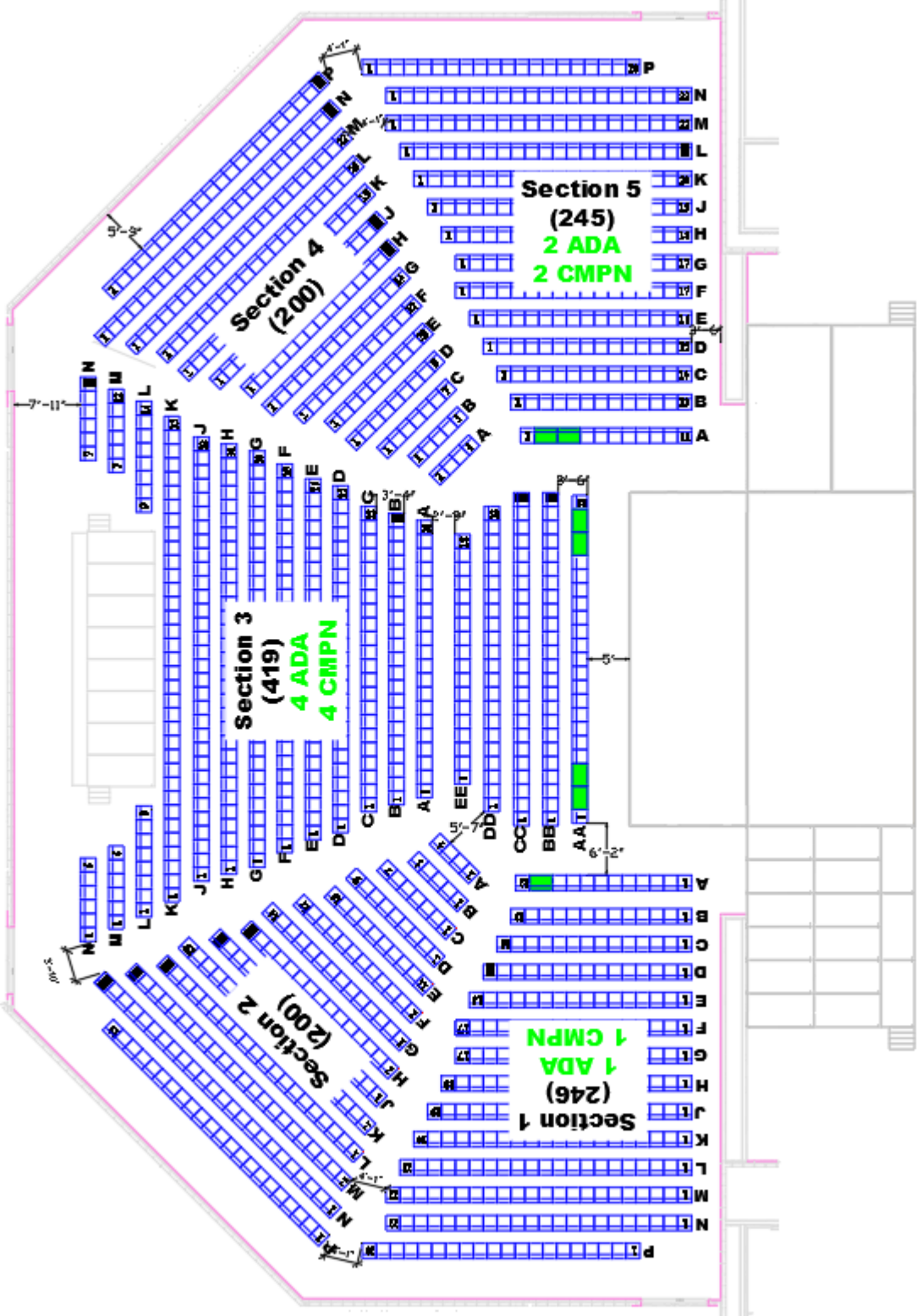


Various Stage Configuration Seating Charts

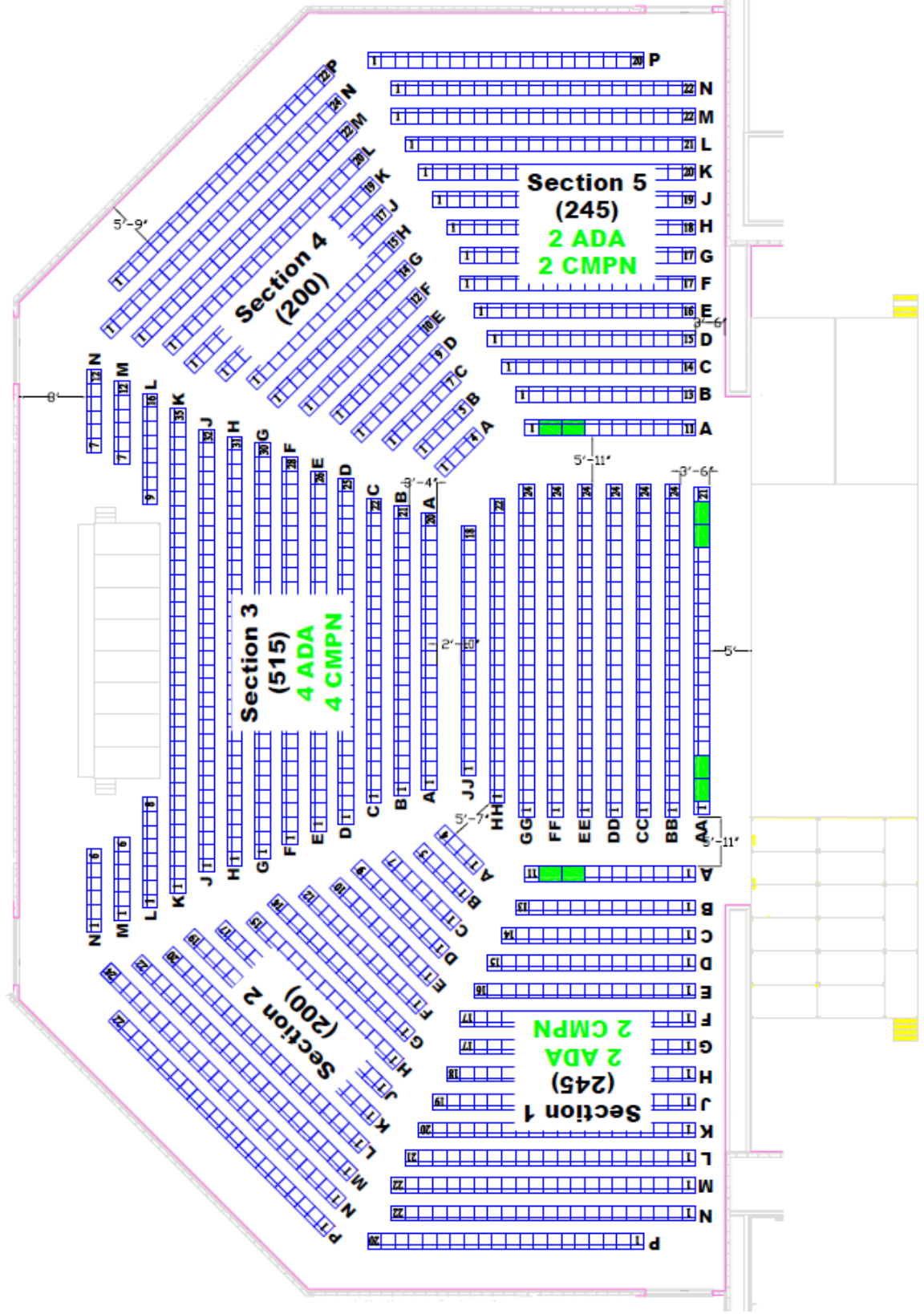
Full Stage (Three Lifts Up)



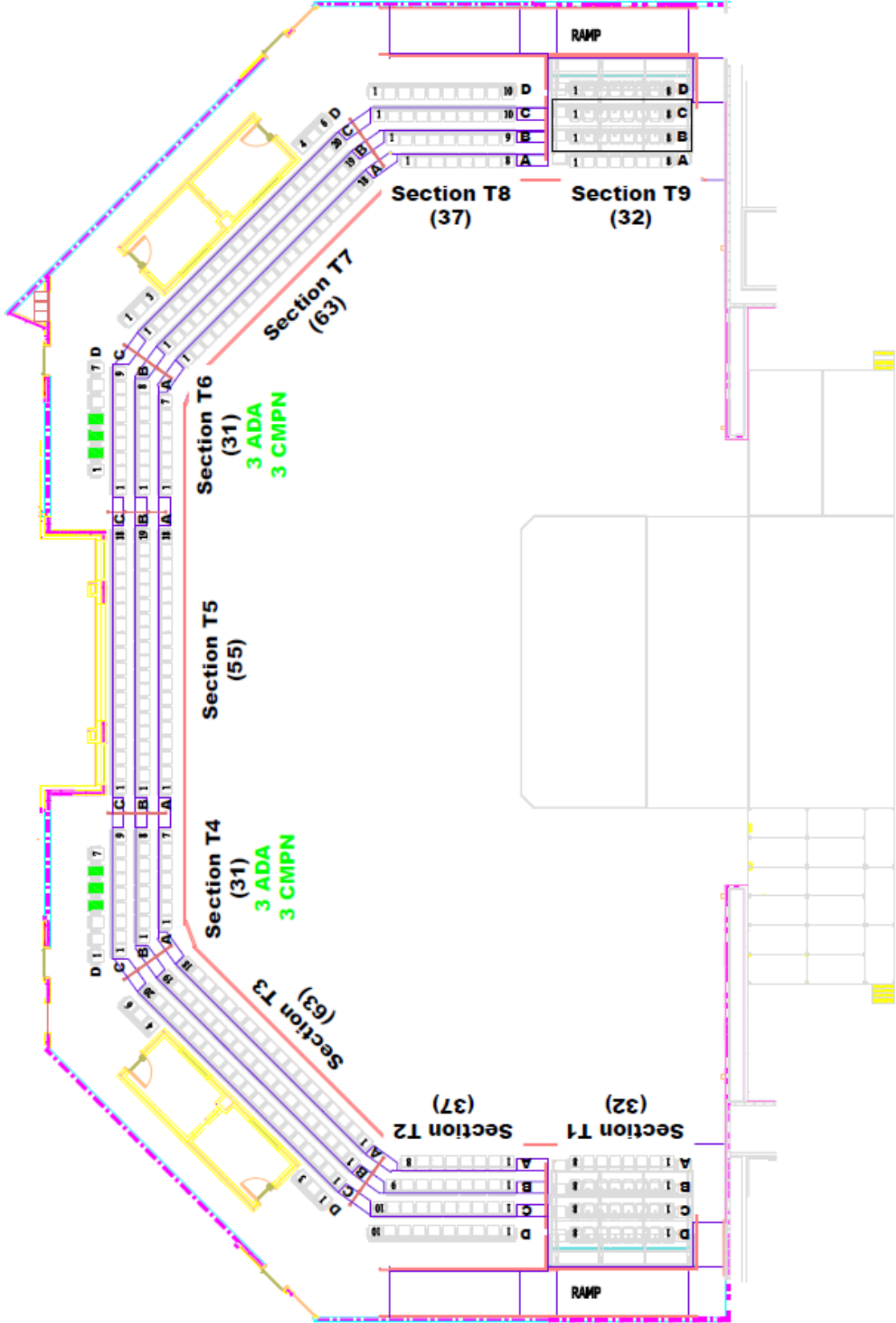
First Stage Lift Down



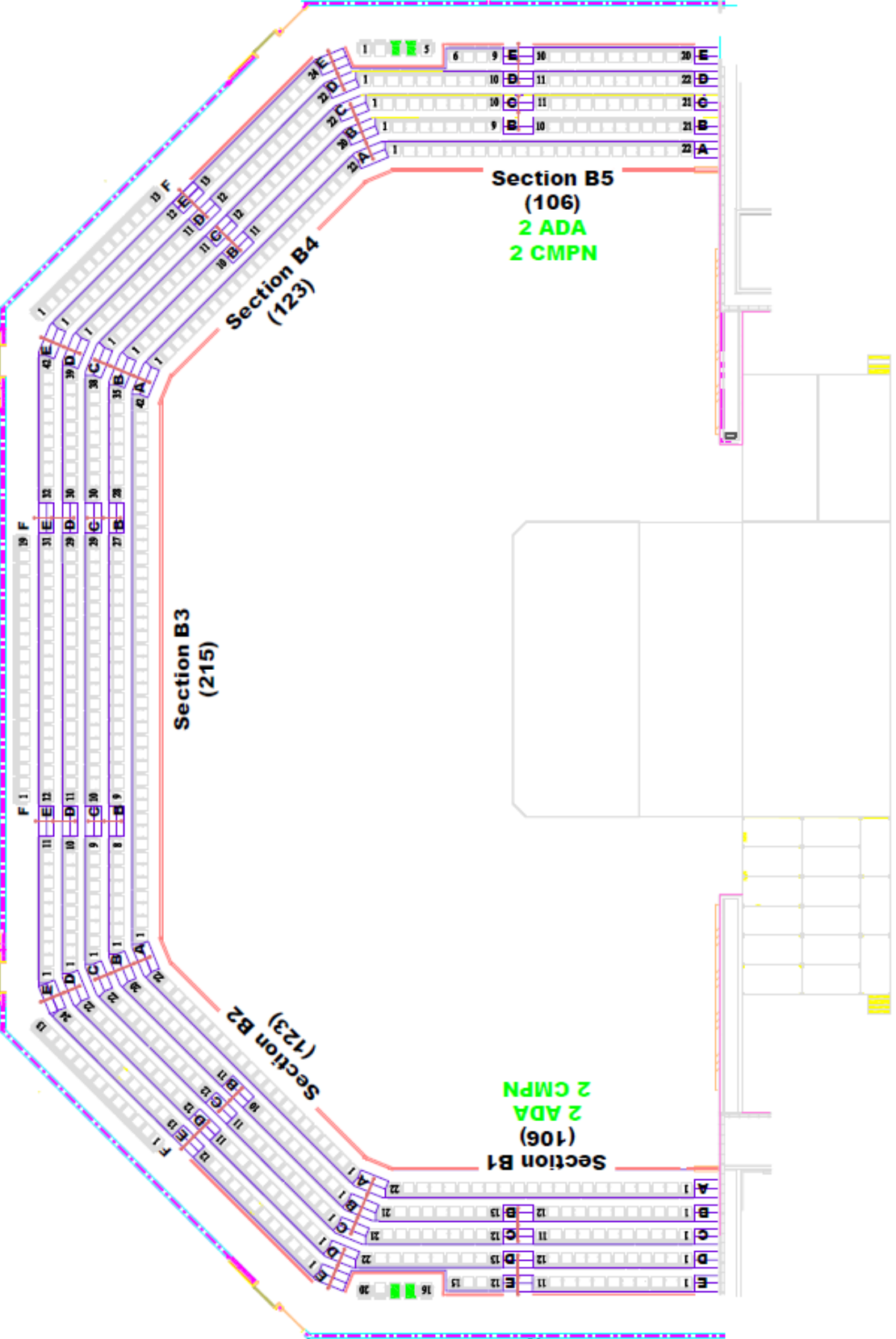
Proscenium Stage (Two Stage Lifts Down)



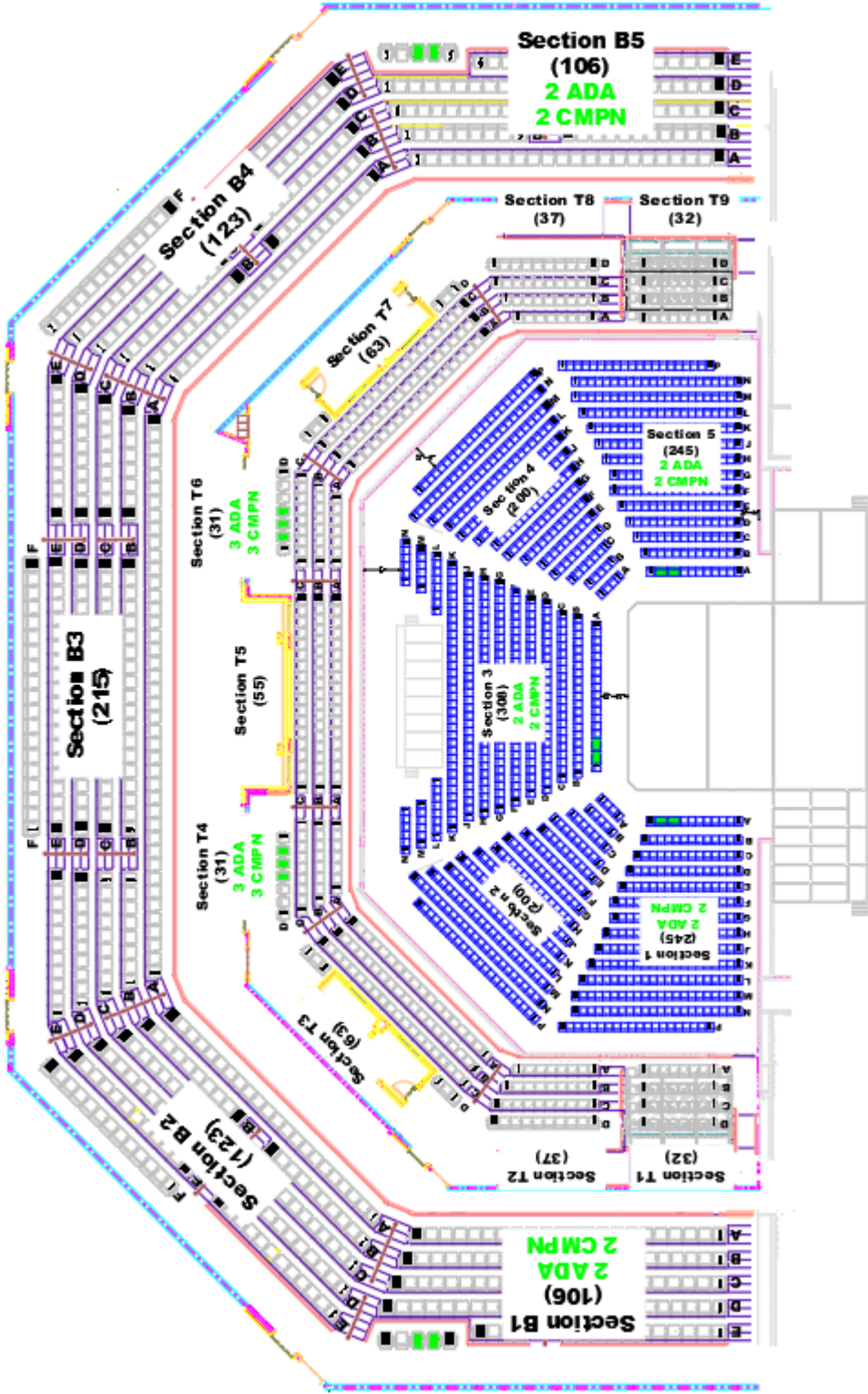
Terrace Level Seating Chart



Balcony Level Seating Chart



The Box, Full View



Note: Balcony Level sits over the Terrace Level. Map not drawn to scale in order to show full view.

Local Services and Contacts

Local Labor, Stagehands, and Production	
<p>Crew One Andrew Dotson - General Manager adotson@crew1.com Cell Phone: 404-630-1886 6160 Peachtree Dunwoody Rd. Suite B205 Sandy Springs, GA 30328</p>	<p>Rhino Staging Joey Malone - Regional Director of Operations joey@rhinostaging.com Cell Phone: 520-272-3993 1827 Powers Ferry Rd. SE Bldg. 4 Atlanta, GA 30339</p>
<p>IATSE Atlanta Local 859 (Wardrobe Only) Cindy Roberts - Business Manager crobertslocal859@gmail.com Office Phone: 678-793-2930</p>	<p>3G Productions Eric Guyton - Production Manager eguyten@3glp.com Cell Phone: 404-345-7541 6040 Boat Blvd. SW Atlanta, GA 30336</p>
<p>Music Matters Production David Lowell - Sales Manager davidlowell@mac.com Cell Phone: 770-480-7758 3331 Green Pointe Pkwy. NW Peachtree Corners, GA 30092</p>	<p>The Backline Company Bryan Akers - Owner bryan.akers@thebacklinecompany.com Cell Phone: 404-587-4865 3519 Church St. Suites ABC Clarkston, GA 30021</p>
Medical & Emergency Services	
<p>Fayetteville Police Department Phone: 770-461-4441 Emergency: 911 760 Jimmie Mayfield Blvd. Fayetteville, GA 30215</p>	<p>Fayetteville Fire Department Phone: 770-461-4548 Emergency: 911 95 Johnson Ave. Fayetteville, GA 30214</p>
<p>Piedmont Fayette Hospital Phone: 770-719-7000 1255 Highway 54 West Fayetteville, GA 30214 (1.9 miles)</p>	<p>Fayetteville Fire Department Station 93 Emergency: 911 212 S Sandy Creek Rd. Fayetteville, GA 30214 (1.3 miles)</p>
<p>Piedmont Urgent Care Phone: 707-835-4925 749 W Lanier Ave. Fayetteville, GA 30214 (3.6 miles) Hours: 8am-8pm</p>	<p>Grady Memorial Hospital Phone: 404-616-1000 80 Jessie Hill Jr Dr. SE Atlanta, GA 30303 (26.1 miles) Nearest Level 1 Trauma & Burn Unit</p>
<p>Walgreens Pharmacy Phone: 770-719-3340 975 Highway 54 West Fayetteville, GA 30214 (3 miles) Hours: 10am-6pm</p>	<p>NEURO TOUR Physical Therapy Leah Lewis - Dir. of US Operations lcozzo@neurotour.com Cell Phone: 678-557-0896</p>

Directions and Addresses to Trilith LIVE

The Box, Atrium & Box Loading Dock	175 Trilith Pkwy Fayetteville, GA 30214
Parking Deck	130 Shepperton Way Fayetteville, GA 30214

From I-85 North (coming from Atlanta)

Take Exit 61 for GA-74 toward Fairburn/Peachtree City. At the end of the ramp, turn left onto GA-74 South (Senoia Road). Continue for about 7 miles, then turn left onto Sandy Creek Road. After approximately 1.5 miles, turn right onto Trilith Parkway and follow it to 175 Trilith Parkway.

From I-85 South (coming from the South or Macon)

Take Exit 61 for GA-74 toward Fairburn/Peachtree City. Turn right onto GA-74 South (Senoia Road). Drive for about 7 miles, then turn left onto Sandy Creek Road. After about 1.5 miles, turn right onto Trilith Parkway and follow it to 175 Trilith Parkway.